

Where to find us



Facebook	@OxdaleProducts
Instagram	@oxdaleproducts
Twitter	@oxdaleproducts
TikTok	@oxdaleproducts
Email	sales@oxdaleproducts.co.uk
Telephone	01246 529020
Location	Unit 20-21, Foxwood Road, Chesterfield, S41 9RF

# OXDALE PRODUCTS LTD



**OPERATING AND MAINTENANCE MANUAL  
TM400 AND TM400 BIG BASE LOG SPLITTER**

**KEEP FOR FUTURE USE**

## CONTENTS

Safety	3
Labels	5
Quick Guide	6
In Depth Instructions	8
Operating Instructions	12
Post Operating Checks and Maintenance	14
Warranty Information	16
Technical Specifications	17
Declaration of Conformity	18
Contact Details	19

### Other Information

Manufacturer	Oxdale Products Unit 20 – 21 Foxwood Road Off Sheepbridge Lane Chesterfield S41 9RF
Year of Construction	2023
Machinery Type	TM400
Mass of Machine	
Serial Number	
Max. Hydraulic Oil Operating Pressure	

## B5

### DECLARATION OF CONFORMITY FOR CE MARKING

#### Company contact details:

Oxdale Products LTD (formerly CS Trading),

Units 20-21, Foxwood Rd, Chesterfield, Derbyshire, S41 9RF, UK

#### Registered Address:

Units 20-21, Foxwood Rd, Chesterfield, Derbyshire, S41 9RF, UK

#### Telephone:

01246 529020

#### Technical file compiled by:

Brian Thurman, Cobweb Cottage, 43 Main Road, Higham, Derbyshire, DE55 6EH,

#### Oxdale Products LTD declares that the product:

Oxdale TM400 log splitter

#### Conforms with the following EU Directives:

Directive 2006/42/EC Machinery

#### And conforms with the following EU Harmonized Standards:

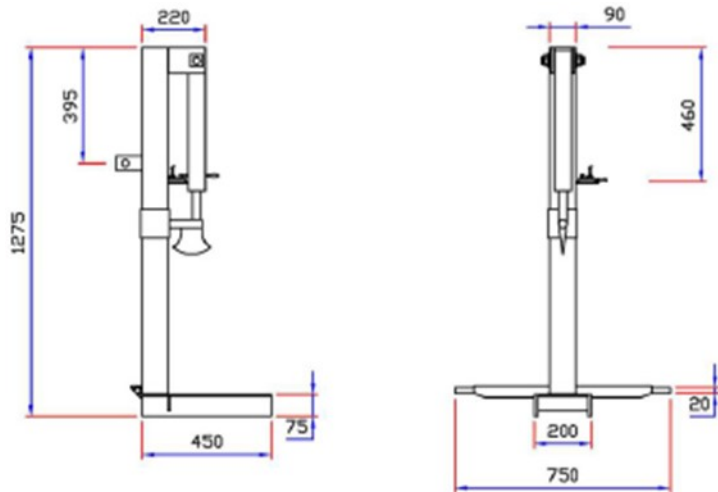
EN 6091: 2017

Name of signatory: Chris Butcher

Position of signatory: Director

Signed: *C. Butcher* Dated: *20/1/13* Place: *Stanfree*

## TECHNICAL SPECIFICATIONS TM400



<b>Log Splitter</b>	TM400		
Weight	64kg		
Tractor Mounting	Cat 1 / 2		
<b>Ram</b>		<b>Spool Block</b>	MB2
Max Pressure	4780psi 330 bar	Max Cont. Pressure	250 bar 3600psi
Ram Bore Diameter	60mm	Max Peak Pressure	320 bar 4600psi
Ram Stroke	400mm	Max Back Pressure on Port T	30 bar 430psi
Ram Rod Diameter	40mm	Port Marked P	Pressure Line
Noise levels will vary depending on tractor used, hearing protection should be worn	Port Marked T	Exhaust Line	
	Relief Valve Setting	220 bar 3150psi	

## SAFETY

**OXDALE PRODUCTS REQUIRES THAT ANYONE OPERATING OR MAINTAINING THE LOG SPLITTER SHALL READ AND UNDERSTAND ALL SAFETY, OPERATION AND MAINTENANCE DATA CONTAINED IN THIS USER MANUAL BEFORE USING THE LOG SPLITTER**

**IT IS FOR SINGLE PERSON USE ONLY.**

The log splitter is an attachment for tractors. Hydraulic action provides the force to drive a splitting wedge into a log. Never operate the log splitter if unauthorised persons are in the area, especially small children. Hazards associated with log splitting may be pinch points, splinters, eye injury and entanglement.

**YOU ARE RESPONSIBLE FOR THE SAFE OPERATION AND MAINTENANCE OF THE LOG SPLITTER. THE MOST IMPORTANT SAFETY DEVICE ON THE EQUIPMENT IS A SAFE OPERATOR.**

- Keep two hands on the operating leavers at all time, never put hands or fingers between the wedge and the log to be split or near moving parts. Always stop the machine before cleaning it or making adjustments.
- The operator should wear suitable PPE including eye protection, gloves and safety boots. Close fitting clothing should be worn to reduce the risk of entanglement. The safety decals and other labels on the machine are shown on the following page.
- Never stand either side of the log splitter whilst operating. Logs can sometimes split apart violently e.g. due to knots. Stand in front of the machine to minimise risk from falling debris.

- Never hold the top of the log whilst setting in place or splitting.
- Do not stand between the tractor and the log splitter when either is in operation.
- Never split two logs on top of each other.
- The log splitter is very powerful but some hard or wet wood can be difficult to split. Do not force the wedge as this could cause injury to yourself and cause damage to the log splitter.
- Never operate the machinery when children or animals are in the danger zones, never let children operate the splitter, even under supervision.
- Do not leave machinery unattended whilst it is running.
- Both ends of each log should be cut as square as possible to help prevent the log from riding out of the splitter. This is also aided by the three holes in the log platform having raised edges to reduce the risk of slipping.
- Always keep the working area free from obstructions.
- The machine is for **single person operation only using both hands on the operating levers.**
- Operate splitter on solid ground level.
- The log splitter is designed only for splitting wood. Using it for any other purpose may damage it and be dangerous to the user and others.
- Ensure that the machine is always stable when in use and is stored safely when not in use.

## WARRANTY INFORMATION

Warranty claims which arrive because of incorrect operation, insufficient maintenance or the use of non – approved consumables e.g. lubricants and hydraulic oils will not be accepted by the manufacturer.

Only original Oxdale parts may be used. When ordering replacement parts, please provide the model name and serial number, if bought from a dealer, please provide the dealers name. Pressure adjustments to the valves must only be carried out by Oxdale authorised dealers.

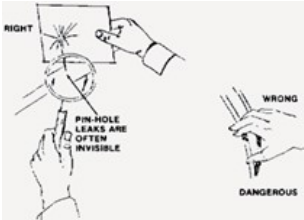
No liability is accepted for damages caused by incorrect repairs, the non-use of original Oxdale replacement parts or repairs that have not been carried out by Oxdale or a pre-authorised specialist, the same applies to auxiliary parts and accessories.

All warranty claims are on a return to manufacturer basis.

Oxdale Products offer a 12-month warranty on all log splitters.

## Hydraulic System

Periodically check the hydraulic oil level with the gauge on the side of the unit and top if required.



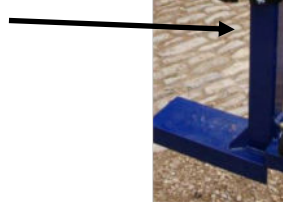
Check for oil leaks, worn hoses and loose fittings. The pressure in the hydraulic system can exceed 2000 PSI. Reinforced hoses can develop pin hole leaks and hydraulic connections can vibrate loose. Hydraulic leaks may be hard to see. Never check for leaks with your hand as the high pressure can inject oil under the skin. This is a medical emergency and if this happens immediate medical attention must be sought.

Please be aware that hoses and fittings can become very hot from heavy use and should be checked with caution. Place your hand near the connection to sense for heat before touching the connection. If the area is hot, you should allow it to cool down before touching any heated connections.

## Greasing

The ram collar needs to be greased where it slides down the guide. This needs to be carried out every 10 hours or alternatively at the start of each day.

**GREASE THE COLLAR GUIDE**



Any grease can be used to carry out this action. The grease will allow the ram to move smoothly up and down, making splitting much easier.

## LABELS

The TM400 log splitter should have the following labels attached. If any safety decals are missing or illegible, they should be replaced immediately.

### SAFETY LABELS



**“Danger! Keep clear of moving parts!”**

Always keep hands and any loose clothing out of the way of moving parts, especially the splitting wedge.



**“Wear eye protection!”**

Splitting logs carries the risk of flying debris, always wear eye protection.



**“Wear gloves!”**

Log splitting can involve contact with sharp objects, suitable glove should always be worn.



**“Wear appropriate footwear!”**

Steel toecap boots should always be worn due to potential heavy objects to fall off the splitter.



**“Wear hearing protection!”**

Operators are required to wear hearing protection conforming to current standards.

## QUICK GUIDE

### Before First Use

Before the log splitter can be used for the first time

- Fit the log splitter to the tractor.
- Connect the hydraulic hoses to the tractor.
- Grease the ram collar.

### Pre-Operation Checklist

It is important for both personal safety and maintaining the good mechanical condition of the log splitter that this checklist is followed.

- Grease the slider every ten hours of operation and pre/post season.
- Check that all hydraulic fittings and connections are tight and in good condition.
- Check for damaged, worn, or missing parts and replace if necessary.
- Replace missing or unreadable safety decals.

### Operating Instructions

- Position the log splitter on solid, level ground when operating.
- Apply the tractor brake securely and place the transmission into neutral/park.
- Position the log under the centre of the wedge.
- Using both hands, lift the operating leavers to lower the wedge and split the log. The speed can be controlled with how much pressure you put on the control valve.
- Use both hands on the operating leavers and push them down to lift the wedge to the desired height.
- Stop splitting if the log starts to move sideways and reposition the log into the centre of the base.
- Should the wedge lodge or become stuck in the log, return the wedge to the fully open position, and gently rock the log free before continuing.

Pick the log to be split. This should have been cut square at both ends. This is very important as it will reduce the chance that the log will slip.

Position the log under the centre point of the wedge.

Place **both** hands on the operating leavers, lift them up and grasp the handle, lift to lower the wedge into the log.

Stop lowering the wedge if the log starts to go sideways and reposition. If the wedge gets stuck, return the wedge to the fully open position and rock the log free before continuing.

Place both hands on the safety leavers and handle, push down to return the wedge to the desired height.

When splitting wood always stand in front of the unit and not to the side as logs can split with some force and be thrown off the unit to the sides. Always keep other people and pets/animals out of the area when splitting logs.

## POST OPERATING CHECKS AND MAINTENANCE GUIDE

The machine must be switched off before any cleaning or adjustments are carried out. The removal of wood chips etc from the unit and the removal of contaminated grease from the wedge collar is strongly advised.

Check for any loose bolts or any other damage at regular intervals.

The TM400 can be stored in a horizontal or vertical position but should be stored in a dry location and in a safe place to avoid the machine being knocked over.



**With both hands grasp the safety levers and squeeze the handle, lift to lower the wedge.**



**The handle will return itself to the neutral position when not lifted or lowered. In this position, there will be no movement of the wedge.**



**Grasping the safety levers and lowering the handle will lift the wedge.**

### **Post Operating Checks and Maintenance**

- Periodically wipe the log splitter down with a damp cloth to keep it free from debris.
- The log splitter wedge may need to be sharpened; this can be done by using a file.

### **Storage and Transportation**

- The TM400 can be stored in a vertical or horizontal position.
- The log splitter should be stored in a dry location.
- The log splitter should be stored in a safe location where it will not get knocked over.
- The TM400 can be transported in a horizontal or vertical position and should be securely strapped.

## **IN DEPTH INSTRUCTIONS**

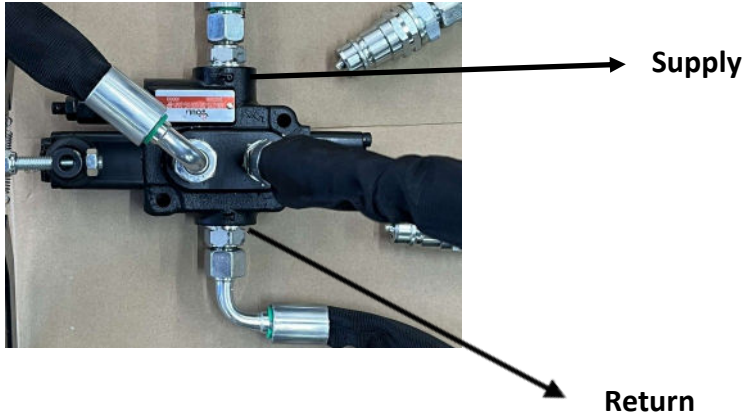
### **Before First Use**

#### **Fitting the Unit to the Tractor**

The log splitter is designed to fit a cat 1 / cat 2 tractor. This can be on the front or the back. The log splitter should be fitted to the tractor so that it is level when positioned at the required working height.

#### **Connect the Hydraulics to the Tractor**

Observe the operating instructions issued by the manufacturer of the vehicle that the log splitter has been attached to. The log splitter has been designed to have a constant flow supply and a free-flowing return.



The flow and return pipes have been fitted with male ½” quick release couplings. The supply pipe is connected to the control valve and is marked “P.” The free-flowing return is marked with a “T.” Connecting these pipes the wrong way round can damage the control valve.

### Greasing

The ram collar needs to be greased where it slides down the guide. This will help to reduce the friction and help the unit run smoothly. This needs to be carried out every 10 hours or alternatively at the start of each day.

## OPERATING INSTRUCTIONS

The log splitter is designed for splitting logs only **AND IS FOR SINGLE PERSON USE**. It can handle logs no bigger than 450mm and no smaller than 75mm in diameter.

Only persons who are competent to do so and having read this manual, in full, should use the log splitter.

Before using the log splitter for the first time or before every use, a visual inspection should be carried out, taking note of any damage and leakages and ensure that they are fully repaired before use.

When operating the unit, it should be positioned on solid and as far as possible, level ground. Wheel blocks should be used to prevent movement of the machine. Both hands should be kept on the safety levers and handle when the ram is being extended and retracted. Lifting the handle will extend the ram and lowering the handle will retract the ram.